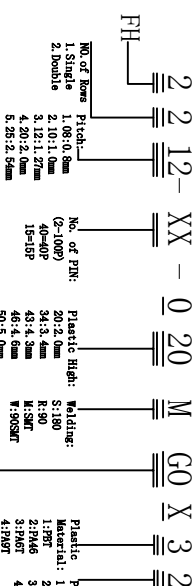
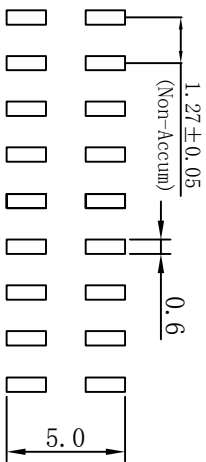


Specifications:
 Current Rating: 1.0 Amp
 Contact resistance: 20MΩ Max
 Insulator resistance: 1000MΩ Min.
 Withstanding Voltage: 500V AC
 Operating Temperature Range: -40° ~ +105° C
 Material And Finish
 Insulator: Polyester, (PA6T UL94V-0)
 Insulator Color: Black
 Contact: Brass
 Contact Plated: See Contact Plated Tab.

Ordering information



Code	Material	Finish	Plating
00	load 100"	Th. 100"	Th. 100"
01	load 11"	Th. 100"	Th. 200"
02	load 21"	Th. 100"	Th. 150"
03	load 31"	Th. 100"	Th. 100"
04	load 41"	Th. 100"	Th. 100"
05	load 51"	Th. 100"	Th. 100"
06	load 101"	Th. 100"	Th. 100"
07	load 201"	Th. 100"	Th. 100"



PCB LAYOUT

未注公差
UNLESS OTHERWISE
SPECIFIED TOLERANCE

线性 (LINER) 角度 (ANGLES)

x ± --	x' ± ±'
.x ± 0.20	.x' ± ±'
.xx ± 0.15	.xx' ± ±'
.xxx ± 0.10	.xxx' ± ±'

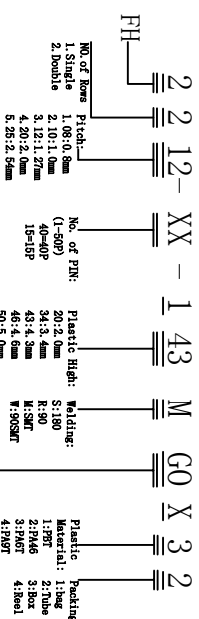
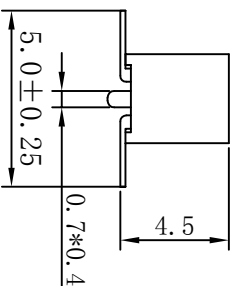
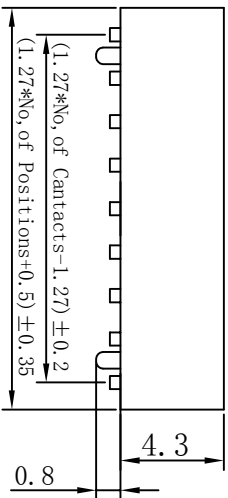
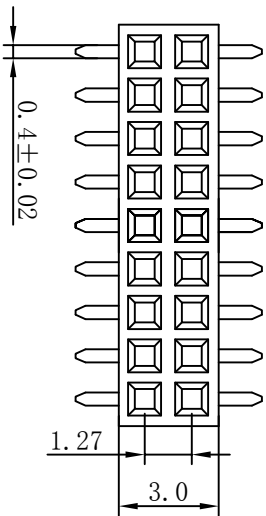
品名 (TITLE): FH1.27*2.0 2*NP SMT 无柱 系列图

A4

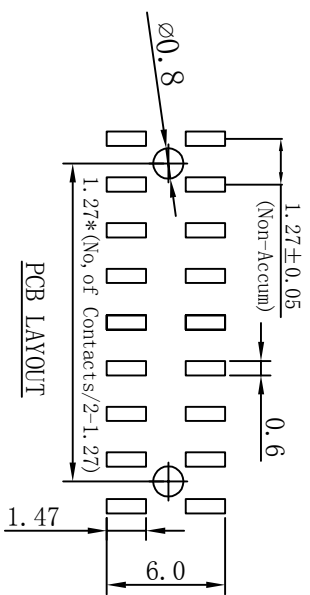
第三视投影
THIRD ANGLE
PROJECTION

绘图 (DRAWING) 审核 (CHECK) 日期 (DATE)

料号(PART NO.): 2212-XX020MCOX-32
 图号(DWG NO.):
 单位 (UNIT): 1:1
 页次 (SHEET): 10F-1



Code	Material	Plating	Finish
00	load 100"	Th. 100"	Th. 100"
01	load 10"	Th. 100"	Th. 200"
02	load 20"	Th. 100"	Th. 150"
03	load 30"	Th. 100"	Th. 100"
04	load 40"	Th. 100"	Th. 100"
05	load 50"	Th. 100"	Th. 100"
06	load 100"	Th. 100"	Th. 100"
07	load 200"	Th. 100"	Th. 100"



未注公差 UNLESS OTHERWISE SPECIFIED TOLERANCE		线性 (LINER)		角度 (ANGLES)	
x	± --	x'	± 1'		
.x	± 0.20	.x'	± --		
.xx	± 0.15	.xx'	± --		
.xxx	± 0.10	.xxx'	± --		

第三视角投影 THIRD ANGLE PROJECTION		品名 (TITLE):	
		FH1.27*4.3 2*NP SMT 带柱 系列图	

审核 (CHECK)		日期 (DATE)	

料号 (PART NO.):		图号 (DWG NO.):	
2212-XX143MGOX-32			



A4

单位 (UNIT)	页码 (SHEET)	10F-1
MM	1/1	